

# TRACT NO 3981

## GRADING PLAN

5' Gunite lined interceptor ditch (See detail Sheet No. 2)

5' Dirt Interceptor ditch

Splash Wall (See detail Sheet No. 2)

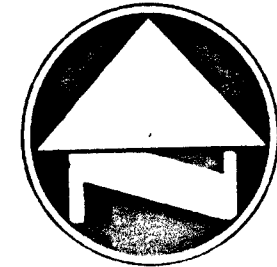
2' Gunite lined down drain (See detail Sheet No. 2)

5' Gunite lined Interceptor ditch

Storm drain (See street improvement Plans)

5' Gunite lined interceptor ditch

Scale



1" = 50'

Contour interval: 5'

- GENERAL NOTES:**
1. All grading to conform to the topographic survey investigation report prepared by N.W. Lawmaster & Co. dated October 2, 1963.
  2. All cut & fill slopes to be 1 1/2 to 1, except low side slopes between lots which will be 1 to 1.
  3. All sideyards to be 6.5' Min.

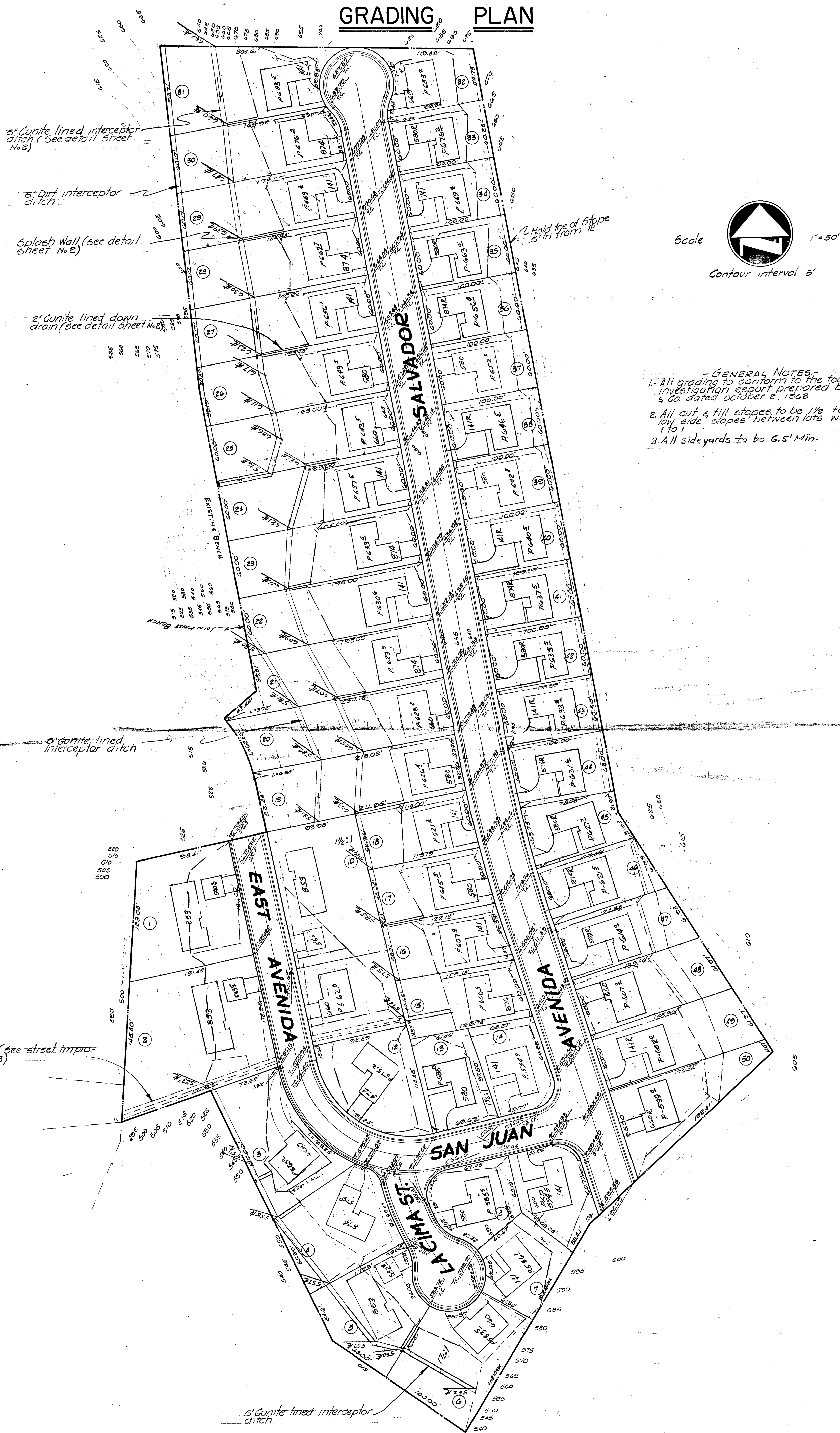
PAD ELEV CHANGES	
LOT NO	ELEV CHANGE
15-31 INCL	+10'
40-44 INCL	+30'
45	+40'
46-49 INCL	+30'
50	+10'
7-9 INCL	+10'

Revised 25 Jan '64 - Pad Elev; Bldg Setbacks; Model Numbers; Bldg. Locations ©		HUNTINGTON ENGINEERING CORP.	
DESIGNED BY H.E. BORDEN	DATE August 1963	7355 SLATER AVE.	HUNTINGTON BEACH CALIFORNIA
SCALE 1" = 50'	SHEET NO. 1	VI 7-6027	OF 2 SHEETS



# TRACT NO 3981

## GRADING PLAN



- GENERAL NOTES:**
1. All grading to conform to the foundations soils investigation report prepared by N.V. Lawmaster & Co. dated October 2, 1963
  2. All cut & fill slopes to be 1 1/2 to 1, except low side slopes between lots which will be 1 to 1
  3. All sideyards to be 6.5' Min.

LOT NO	ELEV CHANGE
15-31 INCL	+12
40-44 INCL	+32
45	+42
46-49 INCL	+32
50	+12
7-9 INCL	+12